

PE/Cy5 Anti-Mouse CD90 (Thy-1) Monoclonal Antibody



天津三箭生物技术股份有限公司
Tianjin Sungene Biotech Co., Ltd.
精准 高效 稳定 Precision Efficient Stable

Catalog Number	Vial Size
M10901-35A	25 µg
M10901-35C	100 µg

Market | 400-621-0003
marketing@sungenebiotech.com

Support | 022-66211636-8024
techsupport@sungenebiotech.com

Web | www.sungenebiotech.com

Important Note: Centrifuge before opening to ensure complete recovery of vial contents.
This product is guaranteed up to one year from purchase.

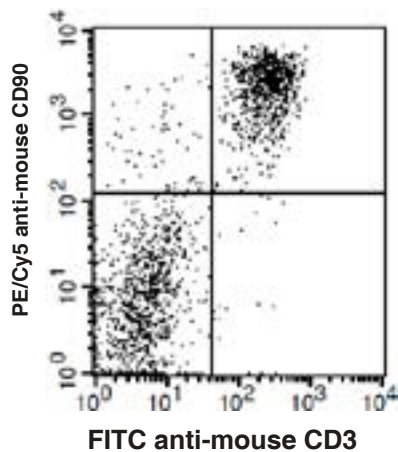
Purified Antibody Characterization

Clone	Isotype	Reactivity
M5/49.4.1	Rat IgG2a	Mouse

Description

CD90 is a 25-35 kD immunoglobulin superfamily member, also known as Thy-1. It is expressed on hematopoietic stem cells and neurons, all thymocytes, and peripheral T cells, but not on B cells. CD90 is a glycosylphosphatidylinositol (GPI)-anchored membrane glycoprotein involved in signal transduction. CD90 is involved in costimulation of lymphocyte proliferation and activation, and hematopoietic stem cell differentiation. CD90 has been shown to interact with CD45.

Illustration of Immunofluorescent Staining



C57BL/6 mouse thymocytes stained with
FITC anti-mouse CD3 and PE/Cy5 anti-mouse CD90

Product Information

Conjugation: PE/Cy5

Formulation: PBS pH 7.2, 0.09% NaN₃,
0.2% BSA

Concentration: 0.2 mg/ml

Storage: Keep as concentrated solution.
Store at 4°C and protected from prolonged
exposure to light. **Do not freeze.**

Application: Recommended Application: FC

Usage: Each lot of this antibody is quality
control tested by immunofluorescent staining
with flow cytometric analysis (The amount of
the reagent is suggested to be used ≤ 0.25
µg /10⁶ cells in 100 µl). Since applications
vary, the appropriate dilutions must be
determined for individual use.

References

- [1] Barclay A, et al. 1997. The Leukocyte Antigen FactsBook Academic Press.
- [2] Craig W, et al. 1993. J. Exp. Med. 177:1331.
- [3] Reif AE and Schlesinger M. 1989. Cell Surface Antigen Thy-1.
- [4] Mayani H, et al. 1994. Blood 83:2410.

For Research Use Only.