

FITC Goat Anti-Rabbit IgG(H+L)



天津三箭生物技术股份有限公司
Tianjin Sungene Biotech Co., Ltd.
精准 高效 稳定 Precision Efficient Stable

Catalog Number	Vial Size
GR200G-02C	100 ug
GR200G-02E	500 ug

Market | 400-621-0003
marketing@sungenebiotech.com

Support | 022-66211636-8024
techsupport@sungenebiotech.com

Web | www.sungenebiotech.com

Important Note: Centrifuge before opening to ensure complete recovery of vial contents.
This product is guaranteed up to one year from purchase.

Purified Antibody Characterization

Isotype	Reactivity
Polyclonal Goat IgG	Rabbit

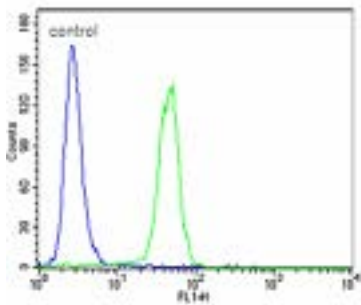
Description

Preparation: The polyclonal antibody was purified from goat antiserum by rabbit IgG affinity chromatography.

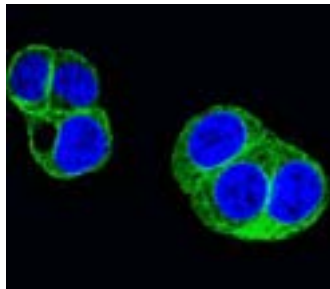
Purity: >90% by SDS-PAGE

Specificity: The antibody reacts with whole molecule Rabbit IgG. No antibody was detected against non-immunoglobulin serum proteins. The antibody may cross-react with immunoglobulins from other species.

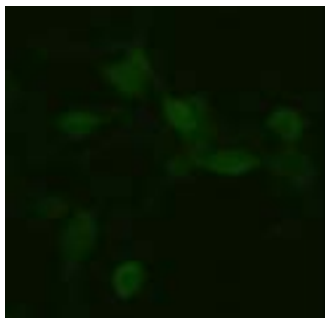
Illustration of Immunofluorescent Staining



Hela cell stained with primary antibody RB14679 and FITC goat anti-rabbit IgG(H+L)



Immunofluorescence Staining of HepG2 cell with primary antibody RB14679 and FITC goat anti-rabbit IgG(H+L) diluted at 1/50



Immunofluorescence Staining of HEK293 cell transfected with Myc-tag fusion plasmid. The primary antibody is anti-rabbit polyclonal antibody. The secondary antibody is FITC goat anti-rabbit IgG(H+L) diluted at 1/200.

Product Information

Conjugation: FITC

Formulation: PBS pH 7.2, 0.09% NaN₃, 0.2% BSA

Concentration: 0.5 mg/ml

Storage: Keep as concentrated solution. Store at 4°C and protected from prolonged exposure to light. **Do not freeze.**

Application: FC (Flow Cytometry), IF(Immunofluorescent)

Dilution: FC: The amount of the reagent is suggested to be used $\leq 1.0 \mu\text{g}/10^6$ cells .
IF: 1/50 ~1/200

Since applications vary, the appropriate dilutions must be determined for individual use.

For Research Use Only.