

## PE Anti-Human CD27 Antibody



天津三箭生物技术股份有限公司  
Tianjin Sungene Biotech Co., Ltd.  
精准 高效 稳定 Precision Efficient Stable

Catalog Number	Vial Size
H30271-09G	25 tests
H30271-09H	100 tests

**Market** | 400-621-0003  
marketing@sungenebiotech.com

**Support** | 022-66211636-8024  
techsupport@sungenebiotech.com

**Web** | www.sungenebiotech.com

**Important Note:** Centrifuge before opening to ensure complete recovery of vial contents.  
This product is guaranteed up to one year from purchase.

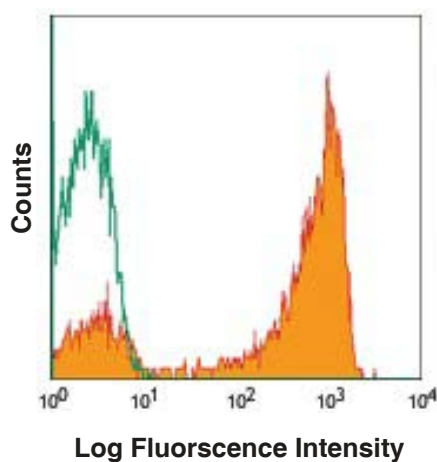
### Purified Antibody Characterization

Clone	Isotype	Reactivity
O323	Mouse IgG1	Human

### Description

CD27 is a 50-55 kD type I membrane protein also known as S152 and T14. It is a lymphocyte-specific member of the TNF-receptor superfamily. CD27 is expressed on medullary thymocytes, virtually all mature T cells, some B cells, and NK cells. CD27 binds to CD70 and plays an important role in costimulation of T cell activation, and regulation of B cell differentiation and proliferation. The cytoplasmic domains of CD27 have also been shown to interact with TRAF2 and TRAF5 to elicit NF- $\kappa$ B and SAPK/JNK activation.

### Illustration of Immunofluorescent Staining



Human peripheral blood lymphocytes  
stained with PE anti-human CD27

### Product Information

**Conjugation:** PE

**Formulation:** PBS pH 7.2, 0.09% NaN<sub>3</sub>, 0.2% BSA

**Storage:** Keep as concentrated solution. Store at 4°C and protected from prolonged exposure to light. **Do not freeze.**

**Application:** Recommended Application: FC

**Usage:** Each lot of this antibody is quality control tested by immunofluorescent staining with flow cytometric analysis (The amount of the reagent is suggested to be used from 20  $\mu$ L to 5  $\mu$ L per 100  $\mu$ L of peripheral blood. Please check your vial). Since applications vary, the appropriate dilutions must be determined for individual use.

### References

- [1] Hintzen R, et al. 1994. Immunol. Today 15:307.
- [2] Agematsu K, et al. 1995. J. Immunol. 154:3627.

**For Research Use Only.**