

## CEA Mouse Monoclonal Antibody



天津三箭生物技术股份有限公司  
Tianjin Sungene Biotech Co., Ltd.  
精准 高效 稳定 Precision Efficient Stable

Catalog Number	Vial Size
PMA-0151	100 ul
PMA-0151M	500 ul
PMA-0151L	1 ml

**Market** | 400-621-0003  
marketing@sungenebiotech.com

**Support** | 022-66211636-8024  
techsupport@sungenebiotech.com

**Web** | www.sungenebiotech.com

**Important Note:** Centrifuge before opening to ensure complete recovery of vial contents.  
This product is guaranteed up to one year from purchase.

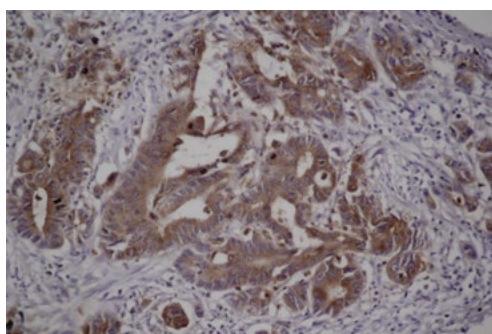
### Purified Antibody Characterization

Clone	Isotype	Application	Reactivity
TSG151	Mouse IgG	IHC	Human

### Description

Carcinoembryonic antigen (CEA), also known as CD66e or CEACAM5, is a 180-200 kDa cell surface glycoprotein whose expression is elevated in intestinal carcinomas and other tumors. CEA mediates cell adhesion, though little more is known about its biological activity. Expression of CEA is correlated with tumorigenicity, and it has been shown to play a role in cell migration, adhesion and invasion in culture cells, as well as in metastasis in vivo.

**Immunogen:** Recombinant protein of human CEA



Immunohistochemistry Staining of Human colon carcinoma with CEA mouse mAb

### Product Information

**Recommended dilution:** IHC: 1:500-1:1000

Optimal dilutions/concentrations should be determined by the end user.

**Form:** Liquid

**Concentration:** 0.2 mg/ml in PBS, pH 7.4, containing 0.02% sodium azide and 50% glycerol.

**Storage instructions:** CEA antibody is stable for 1 month at 2-8°C. For long term storage, aliquot and store at -20°C or below. Avoid repeated freezing and thawing cycles.

**For research use only and not for diagnostic or therapeutic use!**