

CD20 Mouse Monoclonal Antibody



天津三箭生物技术股份有限公司
Tianjin Sungene Biotech Co., Ltd.
精准 高效 稳定 Precision Efficient Stable

Catalog Number	Vial Size
PMA-0116	100 ul
PMA-0116M	500 ul
PMA-0116L	1 ml

Market | 400-621-0003
marketing@sungenebiotech.com

Support | 022-66211636-8024
techsupport@sungenebiotech.com

Web | www.sungenebiotech.com

Important Note: Centrifuge before opening to ensure complete recovery of vial contents.
This product is guaranteed up to one year from purchase.

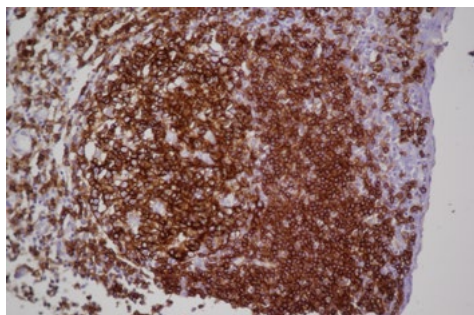
Purified Antibody Characterization

Clone	Isotype	Application	Reactivity
TSG116	Mouse IgG	IHC	Human

Description

Defects in MS4A1 are the cause of immunodeficiency common variable type 5 (CVID5) [MIM:613495]; also called antibody deficiency due to CD20 defect. CVID5 is a primary immunodeficiency characterized by antibody deficiency, hypogammaglobulinemia, recurrent bacterial infections and an inability to mount an antibody response to antigen. The defect results from a failure of B-cell differentiation and impaired secretion of immunoglobulins; the numbers of circulating B cells is usually in the normal range, but can be low.

Immunogen: Recombinant protein of human CD20



Immunohistochemistry Staining of Human normal tonsil with CD20 mouse mAb

Product Information

Recommended dilution: IHC: 1:500-1:1000

Optimal dilutions/concentrations should be determined by the end user.

Form: Liquid

Concentration: 0.2 mg/ml in PBS, pH 7.4, containing 0.02% sodium azide and 50% glycerol.

Storage instructions: CD20 antibody is stable for 1 month at 2-8°C. For long term storage, aliquot and store at -20°C or below. Avoid repeated freezing and thawing cycles.

For research use only and not for diagnostic or therapeutic use!