

## S100P Mouse Monoclonal Antibody



天津三箭生物技术股份有限公司  
Tianjin Sungene Biotech Co., Ltd.  
精准 高效 稳定 Precision Efficient Stable

Catalog Number	Vial Size
PMA-0121	100 ul
PMA-0121M	500 ul
PMA-0121L	1 ml

**Market** | 400-621-0003  
marketing@sungenebiotech.com

**Support** | 022-66211636-8024  
techsupport@sungenebiotech.com

**Web** | www.sungenebiotech.com

**Important Note:** Centrifuge before opening to ensure complete recovery of vial contents.  
This product is guaranteed up to one year from purchase.

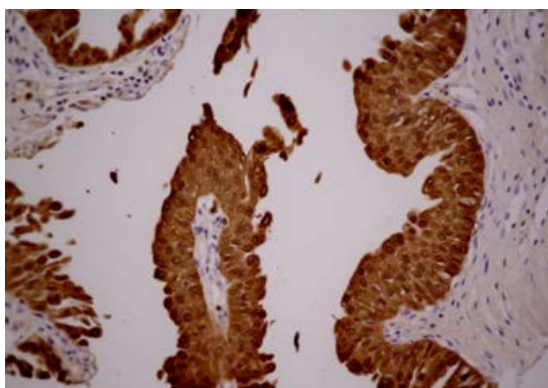
### Purified Antibody Characterization

Clone	Isotype	Application	Reactivity
TSG121	Mouse IgG	IHC	Human

### Description

S100P is a member of the S100 family of proteins. The family is expressed in a wide range of cells and is thought to play a role in cell cycle progression and in differentiation. S100P was initially identified in the placenta at rather high levels. Anti-S100P with nuclear or nuclear/ cytoplasmic immunoreactivity can be seen in essentially 100% of pancreatic ductal adenocarcinoma in pancreatic resection, and fine needle aspiration biopsy specimens. Anti-S100P displays no staining in the benign pancreatic ducts and acinar glands. The detection of S100P expression may help distinguish urothelial carcinomas from other genitourinary neoplasms that enter into the differential diagnosis.

**Immunogen:** Synthetic peptide corresponding to Human S100P.



Immunohistochemistry Staining of Bladder carcinoma with S100P mouse mAb.

### Product Information

**Recommended dilution:** IHC: 1:500-1:1000

Optimal dilutions/concentrations should be determined by the end user.

**Form:** Liquid

**Concentration:** 0.2 mg/ml in PBS, pH 7.4, containing 0.02% sodium azide and 50% glycerol.

**Storage instructions:** S100P antibody is stable for 1 month at 2-8°C. For long term storage, aliquot and store at -20°C or below. Avoid repeated freezing and thawing cycles.

**For research use only and not for diagnostic or therapeutic use!**