

MBP Mouse Monoclonal Antibody



天津三箭生物技术股份有限公司
Tianjin Sungene Biotech Co., Ltd.
精准 高效 稳定 Precision Efficient Stable

Catalog Number	Vial Size
PMA-0131	100 ul
PMA-0131M	500 ul
PMA-0131L	1 ml

Market | 400-621-0003
marketing@sungenebiotech.com

Support | 022-66211636-8024
techsupport@sungenebiotech.com

Web | www.sungenebiotech.com

Important Note: Centrifuge before opening to ensure complete recovery of vial contents.
This product is guaranteed up to one year from purchase.

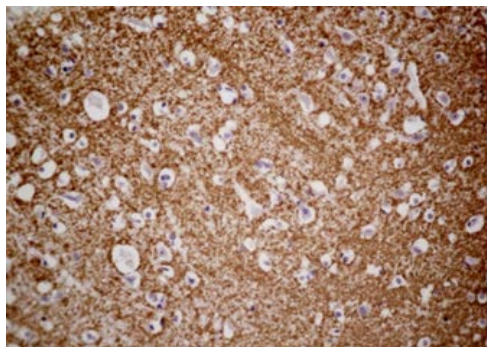
Purified Antibody Characterization

Clone	Isotype	Application	Reactivity
TSG131	Mouse IgG	IHC	Human

Description

Myelin Basic Protein(MBP) is present in the central and peripheral nervous system, the antibody reacts with soft tissue tumors. MBP has been demonstrated in neuromas, neurofibromas, and neurogenic sarcomas; other spindle cell neoplasms do not stain with this antibody. Immunoreactivity for anti-MBP in granular cell tumors strengthens the concept of a Schwann cell derivation of these lesions.

Immunogen: Recombinant protein of human MBP.



Immunohistochemistry Staining of
Oligodendroglioma with MBP mouse mAb.

Product Information

Recommended dilution: IHC: 1:200-1:500

Optimal dilutions/concentrations should be determined by the end user.

Form: Liquid

Concentration: 0.2 mg/ml in PBS, pH 7.4, containing 0.02% sodium azide and 50% glycerol.

Storage instructions: MBP antibody is stable for 1 month at 2-8°C. For long term storage, aliquot and store at -20°C or below. Avoid repeated freezing and thawing cycles.

For research use only and not for diagnostic or therapeutic use!