

Thyroglobulin Mouse Monoclonal Antibody



天津三箭生物技术股份有限公司
Tianjin Sungene Biotech Co., Ltd.
精准 高效 稳定 Precision Efficient Stable

Catalog Number	Vial Size
PMA-0130	100 ul
PMA-0130M	500 ul
PMA-0130L	1 ml

Market | 400-621-0003
marketing@sungenebiotech.com

Support | 022-66211636-8024
techsupport@sungenebiotech.com

Web | www.sungenebiotech.com

Important Note: Centrifuge before opening to ensure complete recovery of vial contents.
This product is guaranteed up to one year from purchase.

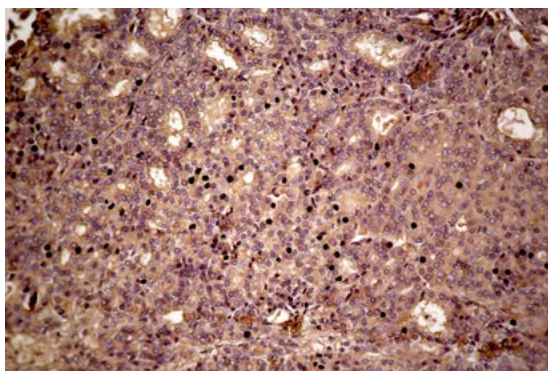
Purified Antibody Characterization

Clone	Isotype	Application	Reactivity
TSG130	Mouse IgG	IHC	Human

Description

Human thyroglobulin (hTG) is a high molecular weight glycoprotein (605 kDa) found in the thyroid follicular cells. It plays a central role in the uptake, incorporation, and regulated biosynthesis of thyroid hormones. Anti-thyroglobulin reacts with human thyroglobulin as demonstrated by a single band of immunoblotting in a lysate of human thyroid tissue. The vast majority of follicular carcinomas of the thyroid will give positive immunoreactivity for anti-thyroglobulin even though sometimes only focally. Poorly differentiated carcinomas of the thyroid are frequently anti-thyroglobulin negative. Adenocarcinomas of other-than-thyroid origin do not react with this antibody.

Immunogen: Human thyroglobulin.



immunohistochemistry Staining of follicular thyroid carcinoma with thyroglobulin mouse mAb.

Product Information

Recommended dilution: IHC: 1:200-1:500

Optimal dilutions/concentrations should be determined by the end user.

Form: Liquid

Concentration: 0.2 mg/ml in PBS, pH 7.4, containing 0.02% sodium azide and 50% glycerol.

Storage instructions: Thyroglobulin antibody is stable for 1 month at 2-8°C. For long term storage, aliquot and store at -20°C or below. Avoid repeated freezing and thawing cycles.

For research use only and not for diagnostic or therapeutic use!