

# GAPDH-HRP Mouse Monoclonal Antibody



天津三箭生物技术股份有限公司  
Tianjin Sungene Biotech Co., Ltd.  
精准 高效 稳定 Precision Efficient Stable

## Catalog Number Vial Size

LK9002T	30 $\mu$ l
LK9002	100 $\mu$ l
LK9002L	1 ml

**Market** | 400-621-0003  
marketing@sungenebiotech.com

**Support** | 022-66211636-8024  
techsupport@sungenebiotech.com

**Web** | www.sungenebiotech.com

**Important Note:** Centrifuge before opening to ensure complete recovery of vial contents.  
This product is guaranteed up to one year from purchase.

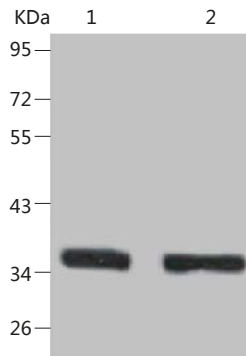
## Purified Antibody Characterization

Clone	Isotype	Applications
1C4	Mouse IgG	WB

## Description

Glyceraldehyde 3 phosphate dehydrogenase (GAPDH) is well known as one of the key enzymes involved in glycolysis. GAPDH is constitutively expressed in almost all tissues at high levels, therefore antibodies against GAPDH are useful as loading controls for western blotting. Some physiological factors, such as hypoxia and diabetes, increase GAPDH expression in certain cell types.

**Immunogen:** Full-length GAPDH protein of human.



Western blot analysis of mouse liver tissue lysate (loading: 40  $\mu$ g/well) with GAPDH-HRP mouse mAb diluted at 1:4000 (lane1), 1:8000 (lane2).

## Product Information

**Recommended dilutions:** WB: 1:500~1:3000

Optimal dilutions/concentrations should be determined by the end user.

**Form:** Liquid

**Concentration:** 1.0 mg/ml in PBS, pH 7.4, containing 0.02% sodium azide and 50% glycerol.

**Storage:** Store at -20° C or below. Avoid repeated freezing and thawing cycles.

**Reactivity:** Human, Rat, Mouse

## Related Products:

Cat.No.	Name
KM9001	$\beta$ -Actin Mouse mAb
KM9002	GAPDH Mouse mAb
KM9003	$\beta$ -Tubulin Mouse mAb
KM9004	Plant Actin Mouse mAb
KM9005	Histone H3.1 Mouse mAb
KM9006	$\alpha$ -Actin Mouse mAb
KM9007	$\alpha$ -Tubulin Mouse mAb
LK2003	Goat anti-Mouse IgG(H+L)-HRP
LK9001	$\beta$ -Actin-HRP Mouse mAb
LK9003	$\beta$ -Tubulin-HRP Mouse mAb
GM200G-02	FITC Goat anti-Mouse IgG(H+L)
GM200G-09	PE Goat anti-Mouse IgG(H+L)
GM200G-37	IF555 Goat anti-Mouse IgG(H+L)
GM200G-38	IF488 Goat anti-Mouse IgG(H+L)
GM200G-40	IF647 Goat anti-Mouse IgG(H+L)
GM200G-43	IF594 Goat anti-Mouse IgG(H+L)

**For Research Use Only.**