

β-Actin Mouse Monoclonal Antibody



天津三箭生物技术股份有限公司
Tianjin Sungene Biotech Co., Ltd.
精准 高效 稳定 Precision Efficient Stable

Catalog Number	Vial Size
KM9001T	30 μl
KM9001	100 μl
KM9001L	1 ml

Market | 400-621-0003
marketing@sungenebiotech.com

Support | 022-66211636-8024
techsupport@sungenebiotech.com

Web | www.sungenebiotech.com

Important Note: Centrifuge before opening to ensure complete recovery of vial contents.
This product is guaranteed up to one year from purchase.

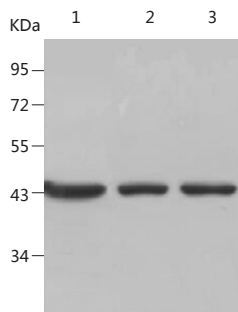
Purified Antibody Characterization

Clone	Isotype	Applications
6G3	Mouse IgG	WB, IHC

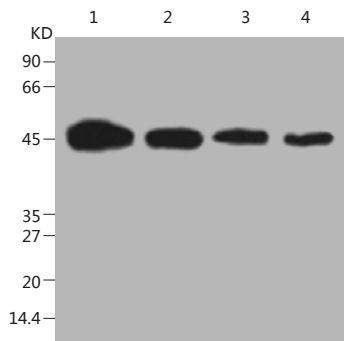
Description

β-Actin is one of six different actin isoforms that have been identified. The actin molecules found in cells of various species and tissues tend to be very similar in their immunological and physical properties. Therefore, antibodies against β-Actin are useful as loading controls for western blotting. However it should be noted that levels of β-Actin may not be stable in certain cells. For example, expression of β-Actin in adipose tissue is very low and therefore β-Actin should not be used as loading control for these tissues.

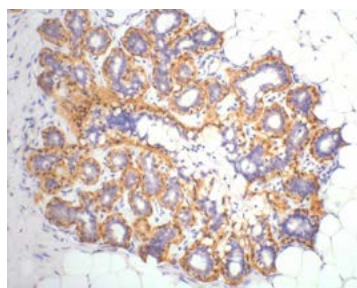
Immunogen: Full-length β-Actin protein of human.



Western blot analysis of Hela cell lysate(lane1), rat brain tissue lysate(lane2) and mouse brain tissue lysate(lane3) with β-Actin mouse mAb(6G3) diluted at 1:5000.



Western blot analysis of Hela cell lysate with β-Actin mouse mAb(6G3) diluted at 1:5000(lane1), 1:10000(lane2), 1:20000(lane3) and 1:40000(lane 4).



Immunohistochemistry Staining of Human ovary tissue with β-Actin mouse mAb(6G3) diluted at 1:200.

Product Information

Recommended dilutions: WB: 1:1000~1:10000
IHC: 1:200

Optimal dilutions/concentrations should be determined by the end user.

Form: Liquid

Concentration: 1.0 mg/ml in PBS, pH 7.4, containing 0.02% sodium azide and 50% glycerol.

Storage: Store at -20°C or below. Avoid repeated freezing and thawing cycles.

Reactivity: Human, Rat, Mouse, Fruit fly

Related Products:

Cat.No.	Name
KM9002	GAPDH Mouse mAb
KM9003	β-Tubulin Mouse mAb
KM9004	Plant Actin Mouse mAb
KM9005	Histone H3.1 Mouse mAb
KM9006	α-Actin Mouse mAb
KM9007	α-Tubulin Mouse mAb
LK9001	β-Actin-HRP Mouse mAb
LK9002	GAPDH-HRP Mouse mAb
LK9003	β-Tubulin-HRP Mouse mAb
LK2003	Goat anti-Mouse IgG(H+L)-HRP
GM200G-02	FITC Goat anti-Mouse IgG(H+L)
GM200G-09	PE Goat anti-Mouse IgG(H+L)
GM200G-37	IF555 Goat anti-Mouse IgG(H+L)
GM200G-38	IF488 Goat anti-Mouse IgG(H+L)
GM200G-40	IF647 Goat anti-Mouse IgG(H+L)
GM200G-43	IF594 Goat anti-Mouse IgG(H+L)

For Research Use Only.