

## Protein Ladder (10-180 kDa)



天津三箭生物技术股份有限公司  
Tianjin Sungene Biotech Co., Ltd.  
标准 高效 稳定 Precision Efficient Stable

<b>Catalog Number</b>	<b>Vial Size</b>
SG2001	250 µl

**Market** | 400-621-0003  
marketing@sungenebiotech.com

**Support** | 022-66211636-8024  
techsupport@sungenebiotech.com

**Web** | www.sungenebiotech.com

**Important Note:** Centrifuge before opening to ensure complete recovery of vial contents.  
This product is guaranteed up to one year from purchase.

### Product Information

**Description:** SG2001 is a three-color protein standard with 10 pre-stained proteins covering a wide range molecular weights from 10 to 180 kDa. Proteins are covalently coupled with a blue chromophore except for two reference bands (one green and one red band at 25 kDa and 75 kDa respectively) when separated on SDS-PAGE (Tris-glycine buffer).

SG2001 is designed for monitoring protein separated during SDS-polyacrylamide gel electrophoresis, verification of Western transfer efficiency on membranes (PVDF, nylon, or nitrocellulose) and for approximate sizing of proteins. The ladder is supplied in gel loading buffer and is ready to use.

Do not heat, dilute, add reducing agent before loading.

**Broad range:** 10-180 kDa

**Ready-to-use:** Supplied in a loading buffer for direct loading on gels

**Easy to identify:** Includes green ~25 kDa and red ~75kDa reference bands

**Recommended loading:** ~1.5 - 2.5µl

**Storage:** Store at +4°C for 3 months; For long term storage, store at -20°C

**Storage buffer:** Constituents: 0.44% Tris citrate/phosphate, 2% SDS, 0.02% DTT, 0.02% Urea, 15% Glycerol

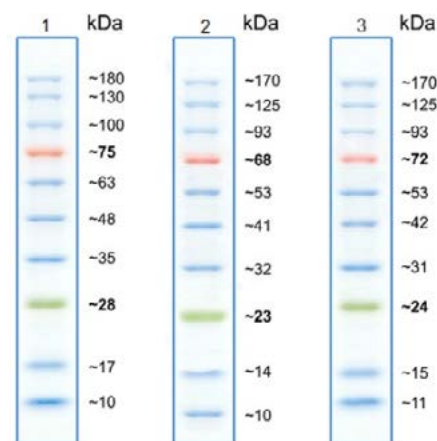
**Tested Applications:** WB(Western Blotting), SDS-PAGE

The application notes include recommended dilutions, the optimal dilutions/concentrations must be determined for individual use.

For Western Blotting, use at an assay dependent concentration. ~1.5-2.5 µl per well for general Western transferring. Apply more for thicker (>1.5 mm) or larger gel.

For SDS-PAGE, use at an assay dependent concentration. 3 µl or 5 µl per loading for clear visualization during electrophoresis on 15-well or 10-well mini-gel, respectively.

### Protein Ladder Data



SDS-PAGE Gel 1: Tris-Glycine (~4-20%), Gel 2: Bis-Tris (12%) MOPS buffer, Gel 3: Bis-Tris (10%) MES buffer. Pre-stained molecular weight standards have a differing mobility and as a consequence varying apparent molecular weight when run in distinct SDS-PAGE buffer systems. The variance in pH of alternative buffers affects the charge of the labelled protein standard and its binding capacity for SDS. The apparent molecular weight of this marker has been determined by calibration against an unstained ladder in each electrophoresis condition.

**For Research Use Only.**