

## CK19 Mouse Monoclonal Antibody



天津三箭生物技术股份有限公司  
Tianjin Sungene Biotech Co., Ltd.  
精准 高效 稳定 Precision Efficient Stable

Catalog Number	Vial Size
PMA-0015	100 ul
PMA-0015M	500 ul
PMA-0015L	1 ml

**Market** | 400-621-0003  
marketing@sungenebiotech.com

**Support** | 022-66211636-8024  
techsupport@sungenebiotech.com

**Web** | www.sungenebiotech.com

**Important Note:** Centrifuge before opening to ensure complete recovery of vial contents.  
This product is guaranteed up to one year from purchase.

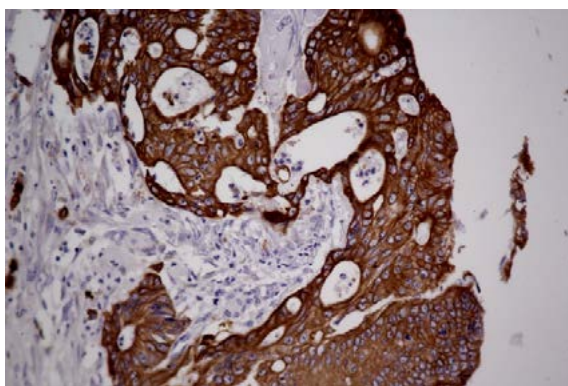
### Purified Antibody Characterization

Clone	Isotype	Application	Reactivity
TSG15	Mouse IgG	IHC	Human

### Description

This protein is a member of the keratin family. The keratins are intermediate filament proteins responsible for the structural integrity of epithelia cells and are subdivided into cytokeratins and hair keratins. The type I cytokeratins consist of acidic proteins which are arranged in pairs of heterotypic keratin chains. Unlike its related family members, this smallest known acidic cytokeratin is not paired with a basic cytokeratin in epithelial cells. It is specifically expressed in the periderm, the transiently superficial layer that envelops the developing epidermis. Keratin 19 is not expressed in hepatocytes, therefore, antibody to keratin 19 is useful in the identification of liver metastasis. The degree of keratin 19 positivity in breast cancer distinguishes malignant from benign tumours. Keratin 19 is often co-expressed with keratin 7.

**Immunogen:** Recombinant protein of human CK19.



Immunohistochemistry Staining of Human colon cancer with CK19 mouse mAb.

### Product Information

**Recommended dilution:** IHC: 1/200-1/500

Optimal dilutions/concentrations should be determined by the end user.

**Form:** Liquid

**Concentration:** 0.2 mg/ml in PBS, pH 7.4, containing 0.02% sodium azide and 50% glycerol.

**Storage instructions:** CK19 antibody is stable for 1 month at 2-8°C. For long term storage, aliquot and store at -20°C or below. Avoid repeated freezing and thawing cycles.

**For research use only and not for diagnostic or therapeutic use!**