

CK8 Mouse Monoclonal Antibody



天津三箭生物技术股份有限公司
Tianjin Sungene Biotech Co., Ltd.
标准 高效 稳定 Precision Efficient Stable

Market | 400-621-0003
marketing@sungenebiotech.com

Support | 022-66211636-8024
techsupport@sungenebiotech.com

Web | www.sungenebiotech.com

Catalog Number	Vial Size
PMA-0012	100 ul
PMA-0012M	500 ul
PMA-0012L	1 ml

Important Note: Centrifuge before opening to ensure complete recovery of vial contents.
This product is guaranteed up to one year from purchase.

Purified Antibody Characterization

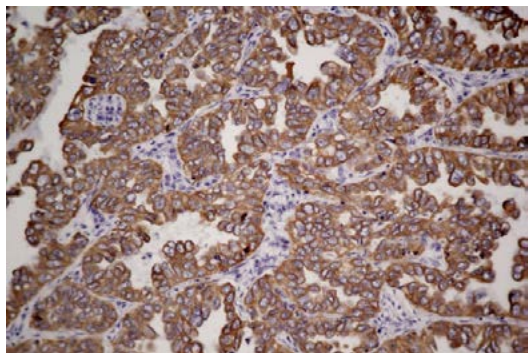
Clone	Isotype	Application	Reactivity
TSG12	Mouse IgG	IHC	Human

Description

Cytokeratin 8 (CK8) belongs to the type B (basic) subfamily of high molecular weight keratins and exists in combination with cytokeratin 18. Cytokeratin 8 is primarily found in most simple epithelia.

Adenocarcinomas and most non-keratinizing squamous carcinomas will stain with anti-CK 8, but keratinizing squamous carcinomas will not.

Immunogen: Recombinant protein of human CK8.



Immunohistochemistry Staining of Human Lung Adenocarcinoma with CK8 mouse mAb.

Product Information

Recommended dilution: IHC:1/500- 1/1000

Optimal dilutions/concentrations should be determined by the end user.

Form: Liquid

Concentration: 0.2 mg/ml in PBS, pH 7.4, containing 0.02% sodium azide and 50% glycerol.

Storage instructions: CK8 antibody is stable for 1 month at 2-8°C. For long term storage, aliquot and store at -20°C or below. Avoid repeated freezing and thawing cycles.

For research use only and not for diagnostic or therapeutic use!